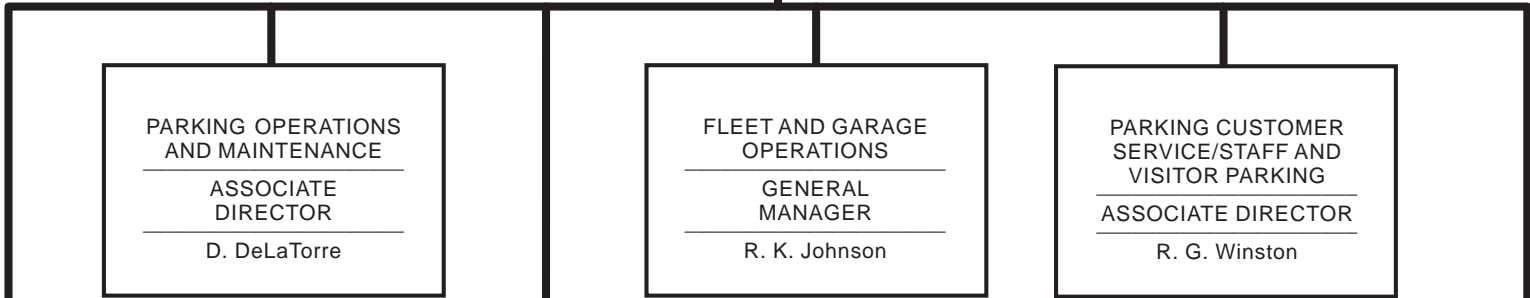


**UNIVERSITY OF MICHIGAN
ORGANIZATION CHART
BUSINESS AND FINANCE
ASSOCIATE VICE PRESIDENT FOR FACILITIES AND OPERATIONS**

686110

**PARKING AND
TRANSPORTATION SERVICES**
EXECUTIVE DIRECTOR
D. Miller



ASSISTANT TO THE
DIRECTOR
ADMINISTRATIVE
ASSISTANT
B. Cornell

BUDGET/FINANCE/
ACCOUNTING
SENIOR
BUDGET ANALYST
L. Engel

TRANSIT SERVICES
MANAGER
C. Lamb