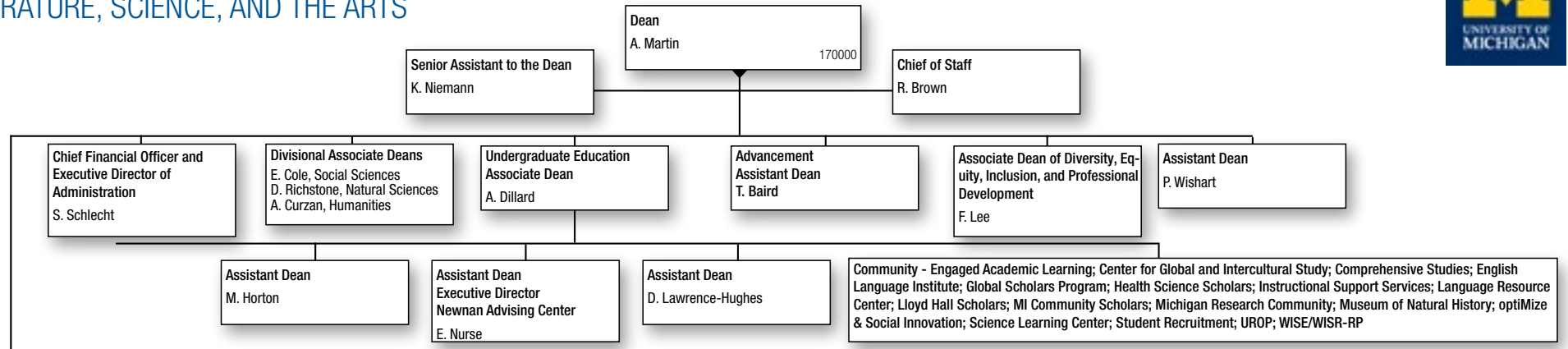


ACADEMIC AFFAIRS

LITERATURE, SCIENCE, AND THE ARTS



INSTRUCTIONAL DEPARTMENTS		
Afroamerican and African Studies F. Ekotto	Ecology and Evolutionary Biology D. O'Foighil	Philosophy E. Anderson
American Culture A. Stern	Economics P. Rhode	Physics B. Orr
Anthropology A. Shryock	English Language and Literature D. Porter	Political Science N. Burns
Asian Languages and Cultures D. Lopez	Germanic Languages and Literatures J. von Moltke	Psychology P. Reuter-Lorenz
Astronomy E. Bergin	History G. Eley	Romance Languages and Literatures C. Moreiras-Menor
Chemistry R. Kennedy	History of Art B. Sears	Screen Arts and Cultures J. von Moltke
Classical Studies A. Leontis	Linguistics R. Queen	Slavic Languages and Literatures M. Krutikov
Communication Studies N. Kwak	Mathematics T. Bloch	Sociology K. Martin
Comparative Literature Y. Prins	Molecular, Cellular, and Developmental Biology R. Denver	Statistics X. He
Earth and Environmental Sciences C. Poulsen	Near Eastern Studies G. Hagen	Women's Studies R. Ceballo

MUSEUMS AND OTHER UNITS
Museum of Anthropological Archaeology M. Galaty
Museum of Archaeology T. Wilfong
Museum of Paleontology D. Fisher
Biological Station K. Nadelhoffer

INSTITUTES, ENHANCED PROGRAMS, PROGRAMS, AND CENTERS		
Applied Physics C. Kurdak	Institute for the Humanities P. McCracken	Organizational Studies M. Mizruchi
Barger Leadership Institute J. Owen-Smith	International Institute P.J. Luong	Environment G. Crane
Biophysics C. Brooks	Judaic Studies J. Veidlinger	Residential College J. Wells
Complex Systems C. Doering	Honors M. LaVaque-Manty	Sweetland Center for Writing A. Gere
	National Center for Institutional Diversity T. Chavous	Weinberg Institute R. Lewis