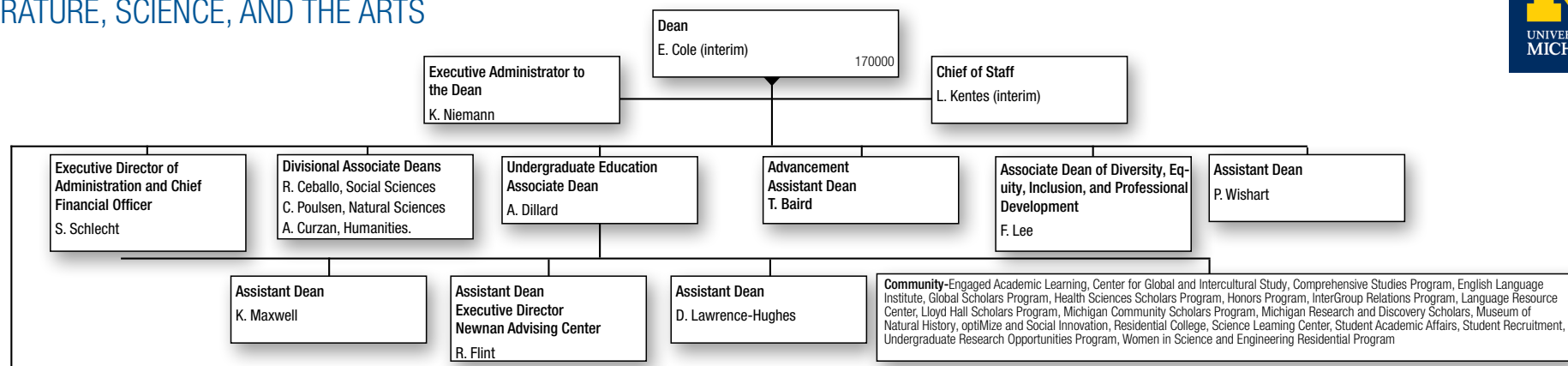


ACADEMIC AFFAIRS

LITERATURE, SCIENCE, AND THE ARTS



INSTRUCTIONAL DEPARTMENTS		
Afroamerican and African Studies M. Countryman	Ecology and Evolutionary Biology D. O'Foighil	Philosophy E. Anderson
American Culture A. Stern	Economics P. Rhode	Physics B. Orr
Anthropology A. Shryock	English Language and Literature D. Porter	Political Science N. Burns
Asian Languages and Cultures S. Juster	Germanic Languages and Literatures A. Gailus	Psychology P. Reuter-Lorenz
Astronomy E. Bergin	History J. Cook	Romance Languages and Literatures V. Binetti
Chemistry R. Kennedy	History of Art B. Sears	Film, Television, and Media Y. Rivero
Classical Studies A. Leontis	Linguistics R. Queen	Slavic Languages and Literatures M. Krutikov
Communication Studies N. Kwak	Mathematics T. Bloch	Sociology K. Martin
Comparative Literature Y. Prins	Molecular, Cellular, and Developmental Biology R. Denver	Statistics X. He
Earth and Environmental Sciences M. Clark	Middle Eastern Studies G. Hagen	Women's Studies E. Wingrove

MUSEUMS AND OTHER UNITS
Museum of Anthropological Archaeology M. Galaty
Museum of Archaeology T. Wilfong
Museum of Paleontology M. Friedman
Biological Station K. Nadelhoffer

INSTITUTES, ENHANCED PROGRAMS, PROGRAMS, AND CENTERS		
Applied Physics C. Kurdak	Institute for the Humanities P. McCracken	Organizational Studies M. Mizruchi
Barger Leadership Institute R. Mahalingam	International Institute J. Cole	Residential College J. Wells
Biophysics C. Brooks	Judaic Studies J. Veidlinger	Sweetland Center for Writing A. Gere
Complex Systems C. Doering	Honors M. LaVaque-Manty	Weinberg Institute R. Lewis
	National Center for Institutional Diversity T. Chavous	